



Aloha,

What's in this edition of the KPAA Newsletter - Vol. 42, September 2012:

- [Workshop Tonight on Proposed Waimea Sports Complex](#)
- [Kalalau Trail Restoration](#)
- [Kauai Youth Report Available](#)
- [Economic Impact of Sports Events](#)
- [e-Waste Disposal Days October 26 and 27](#)
- [Important Election Dates](#)
- [Mahalo to KPAA's New and Returning Members](#)
- [Become a KPAA Member!](#)

Workshop Tonight on Proposed Waimea Sports Complex

The public is invited to participate in a planning workshop tonight from 6:00 to 8:30 PM at Waimea Theatre to provide input on a proposed sports complex for baseball, soccer, track and field events and football. The complex would be located at or adjacent to Waimea Canyon Park. The County of Kauai provided a grant to KPAA to explore the feasibility of the project, in response to interest from Westside leaders for more sports facilities to serve the community and offer a site for inter-island tournaments and events. Kimura International was contracted by KPAA to prepare the feasibility study and propose a master plan. The workshop will include a discussion of the economics of a sports complex in Waimea and a review of design alternatives. The public is encouraged to attend to share their ideas. The feasibility study will be completed by December 31.



Kalalau Trail Restoration



KPAA has awarded a contract to Pono Pacific Land Management LLC to rehabilitate miles 3 to 11 of the Kalalau Trail on the Napali Coast and Native Hawaiian Conservation will provide on-site coordination and supervision for the trail rehabilitation project. A State grant-in-aid to KPAA funds the project and the State Department of Land and Natural Resources, State Parks Division oversees the grant.

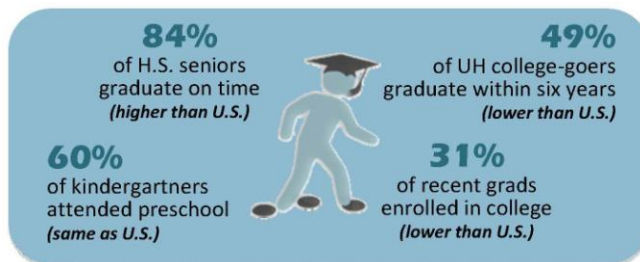
Trail work began in mid-September and is scheduled for completion by November 2013. A

volunteer Citizens Advisory Committee composed of trail users, hunters and environmental advocates is providing guidance on the project. An archeological inventory survey plan and a survey of the botanical assets along the trail corridor are guiding the work.

Kauai Youth Report Available

KPAA has published a new report on Kauai youth that looks at 22 indicators of youth achievement, health and well-being. The report is now available [here](#). The report serves as a baseline of information for the **Keiki to Career** initiative being developed by a large group of community members committed to ensuring

that Kauai's keiki and young adults are healthy, competent, confident and caring. They have created a mission to "unite the community in nurturing and developing Kauai's young people from keiki to career so they are *ready to learn and ready for life*." The Department of Education, Kauai Community College, preschools, nonprofits working with families and youth, and health and social services agencies are collaborating to create an action plan to better align and integrate services to achieve greater impacts. Go to KPAA's website www.kauainetwork.org/programs/keiki-to-career-kauai/ for more information or call KPAA at 632-2005 to get involved.



Economic Impact of Sports Events



The 2010 report *Kauai Comprehensive Economic Development Strategy* (CEDS) included sports and recreation as one of six key job clusters for the island. To better understand the economic impact of sports and recreation events held on Kauai, through a County grant KPAA has prepared an inventory of sports events that attract off-island visitors. KPAA has contracted with Dr. Jerry Agrusa to look at those events in preparing the economic impact study.

Dr. Agrusa is a Professor and Program Chair of Travel Industry Management in the College of Business Administration at Hawaii Pacific University. The study is scheduled for completion by December 31.

e-Waste Disposal Days October 26 and 27

The University of Hawaii is offering a free event to recycle your e-waste in an earth-friendly way. So get those old computers and accessories, handheld electronic devices, and office, audio and video equipment out of the garage or closet and mark your calendar to go to Kauai Community College on Friday, October 26 if you are a business, government agency, school or nonprofit or Saturday, October 27 for household residents. The event will be from 9 AM to 3 PM each day. For a campus map showing the location and for more information, visit www.hawaii.edu/ewaste.

Important Election Dates

September 25 - County Council candidate debate, organized by the Chamber of Commerce, will be held on Tuesday, starting at 6:30 PM at War Memorial Convention Hall and broadcast live on KONG Radio AM 570. The video can be viewed on Hoike Channel 52 at a later date.

October 8 - the last day to register to vote in the General Election

October 23 to November 3 – General Election early voting in the basement of the Historic County Annex in Lihue

October 30 - last day to request an absentee mail ballot for the General Election

November 6 - General Election



Mahalo to KPAA's New and Returning Members

Since June 2012, our new and renewing members are:

General Members

- Boys & Girls Club of Hawaii, Kauai Branch
- County of Kauai, Department of Water
- County of Kauai, Elderly Affairs
- County of Kauai, Transportation Agency
- County of Kauai, Workwise & Workforce Investment Board
- Hale Opio Kauai, Inc.
- Kauai Aloha Foundation
- Kauai Association of Architects
- Kauai Visitors Bureau
- Lawai International Center
- Life's Bridges Hawaii, Inc.
- State of Hawaii, Governor's Office, Kauai

Supporting Members

- Aunty Liliko'i Products
- BASF Plant Science, LP
- Blue Hawaiian Helicopters
- Ching Young Village Shopping Center
- Dow AgroSciences LLC
- First Hawaiian Bank
- Patrick Gegen
- Island Helicopters Kauai, Inc.
- King Auto Center

- Princeville Center
- Safeway, Inc.
- Jan TenBruggencate

Patron Members

- Grove Farm Company Inc.
- Koa Trading Company, Inc.
- Princeville Center

Become a KPAA Member!

Becoming a member of KPAA is easy - just [follow this link](#) to join a great network of people and organizations working to make Kauai an even better place for all of us.

You are receiving this newsletter because of your past participation in Kauai Planning & Action Alliance committees, workshops, events or because you have asked to be included as a subscriber. We use newsletters to share information with you about KPAA activities, upcoming events and other important community issues we think you'll find of interest. To stop receiving all emails and newsletters from KPAA, just click on the Unsubscribe button below.

[Unsubscribe](#) rayne@kauainetwork.org from this list | [Forward to a friend](#) | [Update your profile](#)

Our mailing address is:

Kauai Planning & Action Alliance, Inc.
2959 Umi Street, Suite 201
Lihue, HI 96766

[Add us to your address book](#)

Phone 808.632.2005
www.kauainetwork.org

Copyright (C) 2012 Kauai Planning & Action Alliance, Inc. All rights reserved.

The MailChimp logo, featuring the word "MailChimp" in a stylized, handwritten-style font.