

KAUA'I PLANNING & ACTION ALLIANCE

BRINGING PEOPLE TOGETHER TO CREATE A BETTER FUTURE FOR KAUA'I

2011 Board of Directors

Marissa Sandblom
Chair

Beryl Blaich
Vice Chair

Mark Hubbard
Treasurer

Sue Kanoho
Secretary

Mason Chock

Helen Cox

Gilbert Peter Kea

Eric Knutzen

Joy M. Koerte

Jody Kono Kjeldsen

Owen Moe



2011 Annual Report



KPAA

2959 Umi Street, Suite 201
Lihu'e, Hawai'i 96766

Phone 808.632.2005

Fax 808.632.2018

kpaa@kauainetwork.org

www.kauainetwork.org





From the Board Chair and President/CEO



Aloha Friends,

We were inspired by the recent article "Collective Impact—Creating Large-Scale Social Change" by John Kania and Mark Kramer. The authors contend that substantially greater progress could be made in alleviating many of our most serious and complex social problems if nonprofits, government agencies, businesses, and the public work together in a collaborative ongoing effort around a common vision, common goals and common metrics in order to create community-scale collective impact.

This collaborative approach can be applied to just about any community problem that has a sense of urgency and where there is the opportunity for broad support.

It felt like they were talking to us, for we've been advocating a similar approach since KPAA was started 9 years ago. We've been exploring this idea over the past year with a number of people who care deeply about Kaua'i's future.

The result has been the beginning of a new initiative that focuses on the development of young people from cradle to career by aligning and integrating education, support services, and parent and community support. We want to help island keiki and youth become ready to learn and ready for life.

In the months ahead you will hear more about this new initiative and we urge you to join us in working on behalf of all Kaua'i's young people.

Me ke aloha pumehana,

Marissa Sandblom

Marissa Sandblom
Chair, Board of Directors

Diane Zachary

Diane Zachary
President & CEO

A shared vision is not an idea...it is rather, a force in people's hearts...at its simplest level, a shared vision is the answer to the question "What do we want to create?" ~ Peter Senge

KPAA 2011 Programs & Activities

Collective Impact-Action for Large Scale Social Change

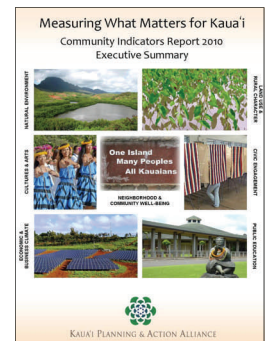
- Convened a group of Kaua'i's proactive education, social service and community leaders to discuss launching a large-scale, cross-sector initiative using a collective impact approach. This would include working together with a shared vision, shared goals and shared metrics in order to achieve greater impact and results.
- Identified a preliminary goal: *Nurture and develop Kaua'i children and youth who are healthy, empowered and self-motivated, living a life that matters with the tools they need to succeed cradle to career.*
- Received a grant from the Hawai'i Department of Education-Kaua'i Complex Area to assess the feasibility of a multi-year initiative to build a civic infrastructure to help children and youth be successful cradle to career, working with the Collective Impact/Cradle to Career Team.
- Built partnerships with the educational system, youth service providers and business community members.
- Working to establish multi-partner funding to support this long-term collaborative effort.



Supporting children and youth with academic and life skills.

Update of Kaua'i's Community Indicators Report

- Published the third biennial report *Measuring What Matters for Kaua'i – Community Indicators Report 2010* as a guide for decision-makers. It looks at 50 indicators and provides important quantitative and qualitative data on economic and business climate; public education; neighborhood and community health and well-being; civic engagement; natural environment; land use and rural character; and cultures and arts. Available to download at www.kauainetwork.org.
- The report includes Opportunities for Action, with steps that government, businesses, nonprofit groups and individuals can take to move the island in more positive directions.



State Park Improvements

- In March, concluded a collaboration with Hui o Laka for the renovation of the historic Civilian Conservation Corps (CCC) Camp buildings in Koke'e State Park, funded by a State grant-in-aid through the Department of Land and Natural Resources.

KPAA 2011 Programs & Activities – continued

Enhancing Kaua‘i’s Sustainability

- Convened Sustainability Action Team (SAT) meetings to discuss Kaua‘i’s systems and suggest policies and programs needed to help the island become sustainable and more self-sufficient.
- The SAT established five priority areas to pursue: 1) Implement a public education campaign to change consumption habits and reinforce the 3R’s - reduce, reuse and recycle; 2) Measure and track Kaua‘i’s carbon footprint; 3) Prepare an assessment of the island’s sustainability systems (such as ground and surface water, solid waste, wastewater, energy, transportation, lands, building stock, impacts of climate change, etc.) to establish a baseline for future analysis, planning and decision-making; 4) Construct shelters at bus stops; and 5) Get local products and produce in the big markets on Kaua‘i.
- Helped arrange the visit of Yale University graduate students to conduct a study analyzing Kaua‘i’s materials flow. Their report included recommendations for measuring carbon emissions.



Nonprofit Capacity Building Trainings

- Hosted a webinar on “Collective Impact: Creating Large Scale Social Change,” organized by Stanford Social Innovation Review.
- Offered an all-day workshop “A Social Media Approach for Nonprofits” in November taught by Chuck Lasker of Social Kaua‘i, with funding from the Atherton Family Foundation to enhance skills in Kaua‘i nonprofits.

Safe Parking for Kaua‘i’s Homeless

- Pursuing a pilot program to offer safe places to park overnight for Kaua‘i’s homeless who are sleeping in their vehicles. The program will include case management and referrals to needed services with a goal of finding permanent housing for participants.

KPAA Member Services

- Hosted an April meeting on “How Healthy Are Kaua‘i’s Watersheds” featuring guest speaker Michael H. Kido, Director, Hawai‘i Stream Research Center, University of Hawai‘i-Mānoa.
- The June annual membership meeting highlighted activities of the past year and looked at the year ahead. The featured speaker was Leslie Wilcox, PBS Hawai‘i President and CEO, who discussed the award-winning program called HIKI NŌ, the nation’s first statewide student news network. Kaua‘i student journalists who participated in the program were on hand to answer questions.
- Hosted a Winter membership meeting with presentations on the *Measuring What Matters for Kaua‘i: Community Indicators Report 2010* and the new Collective Impact Cradle to Career Learning Initiative.
- Published bi-monthly e-newsletters to keep members and friends informed of KPAA activities.



Michael Kido (right) discusses stream data with Ed Nakaya.

Contract Services

- Assisted the Kekaha Host Community Benefits Citizens Advisory Committee (CAC) in developing a fair, transparent process to solicit and review project proposals for funding to benefit Kekaha and its residents as compensation to the community for hosting the landfill. Facilitated CAC public meetings and workshops.
- Worked with the Kaua‘i County Anti-Drug Office, Drug Treatment Committee, treatment experts and community members to develop a scope of work for a Adolescent Healing Center feasibility study.

Mahalo to KPAA's 2011 Sponsors & Donors

Program Sponsors

County of Kaua'i	State of Hawai'i, Department of Education
First Hawaiian Bank Foundation	State of Hawai'i, Department of Land and Natural Resources
Hau'oli Mau Loa	
Kaua'i Island Utility Cooperative	

Donors

Walt & Anne Barnes	Eric Knutzen
Thomas Bird	Jody Kono Kjeldsen
Beryl Blaich	Bonnie Lake
Alexander C. Brodie	Law Offices of Nancy J. Budd
Andrew F. Bushnell	Judy Lenthall
Charlotte H. Carvalho	Jeffrey S. Lindner
Dr. Helen Cox & John Latkiewicz	Dr. Robert M. Long, DDS
Puna Kalama Dawson	Larry Magnussen
Déjà vu Surf Hawaii	Owen Moe
Marj Dente	Daynette Morikawa
Fujita & Miura Public Relations	Guy Nakashima
Kai'opua Fyfe & Sabra Kauka	Mary Paterson
Grand Hyatt Kaua'i Resort & Spa	Samuel W. Pratt
Darcy W. Gray	Barbara Robeson
Grove Farm Company, Inc.	Nan Sakaguchi
David & Shirley Iha	Bernadette Sakoda
Sue Kanoho	Marissa Sandblom
Kaua'i Island Finance, Inc.	The Gas Company
Kaua'i Team Challenge, Inc.	Frederick & Lorita Wichman
Gilbert Peter Kea	Douglas Wilmore
Eric A. Knudsen Trust	Peter M. Yukimura
Carole Knutzen	Diane Zachary

2011 General & Supporting Members

Patron Supporting Members

Mark Hubbard	<i>Kou Level (\$1,000-2,499)</i>
Grove Farm Company, Inc.	<i>Kamani Level (\$500-999)</i>
Green Energy Hawai'i, LLC	<i>Kukui Level (\$100-499)</i>

General Members

Boys & Girls Club of Hawai'i, Kaua'i Branch ▪ Center for Ocean Studies ▪ County of Kaua'i, Agency on Elderly Affairs ▪ County of Kaua'i, Civil Defense Agency ▪ County of Kaua'i, Dept. of Parks and Recreation ▪ County of Kaua'i, Dept. of Water ▪ County of Kaua'i, Dept. of Finance ▪ County of Kaua'i, Fire Dept. ▪ County of Kaua'i, Housing Agency ▪ County of Kaua'i, Office of Economic Development ▪ County of Kaua'i, Planning Dept. ▪ County of Kaua'i, Transportation Agency ▪ County of Kaua'i, Wastewater Management Division ▪ County of Kaua'i, Workwise & Workforce Investment Board ▪ Garden Island Canoe Racing Association ▪ Garden Island RC&D, Inc. ▪ Good Beginnings Alliance ▪ Hale 'Opio Kaua'i, Inc. ▪ Hanalei Roads Committee ▪ Hawai'i Small Business Development Center ▪ Kaua'i Aloha Foundation ▪ Kaua'i Association of Architects ▪ Kaua'i Board of Realtors ▪ Kaua'i Chamber of Commerce ▪ Kaua'i Community College ▪ Kaua'i Economic Development Board (KEDB) ▪ Kaua'i Filipino Chamber of Commerce ▪ Kaua'i Filipino Community Council ▪ Kaua'i Habitat for Humanity ▪ Kaua'i Independent Food Bank, Inc. ▪ Kaua'i Island Utility Cooperative (KIUC) ▪ Kaua'i Path, Inc. ▪ Kaua'i United Way ▪ Kaua'i Visitors Bureau ▪ Lawai International Center ▪ Leadership Kaua'i ▪ Life's Bridges of Hawai'i, Inc. ▪ Malama Kaua'i ▪ Malama Maha'ulepu ▪ Po'ipu Beach Resort Association ▪ Queen Lili'uokalani Children's Center ▪ Royal Order of Kamehameha I, Chapter 3 ▪ Sierra Club Kaua'i Group, Hawai'i Chapter ▪ Wilcox Health Systems/Hawai'i Pacific Health

Supporting Members

4DVentures, LLC ▪ Neil Clendeninn ▪ Fujita & Miura Public Relations ▪ Patrick Gegen ▪ Kaua'i Dreams Realty ▪ Kaua'i Nursery & Landscaping, Inc. ▪ Kupu A'e/Kaua'i Team Challenge, Inc. ▪ MacDougall & Associates

A warm mahalo to all of KPAA's volunteers for their wisdom and valuable insights.

Statement of Revenue, Expenses & Changes in Fund Balance (12/31/2011)

REVENUE	
Contracts	39,272
Contributions	5,995
Grants	322,454
Membership Dues	5,251
Registration Fees	122
Total Revenue	373,094
EXPENSES	
Advertising & Promotion	564
Bank Fees	58
Depreciation	170
Dues	158
Equipment Rental & Leasing	2,894
Insurance	2,535
Meetings & Conference Events	1,813
Postage and Shipping	369
Printing and Publications	4,553
Professional Services	245,838
Rent/Occupancy	22,812
Salaries, Wages & Benefits	139,596
Supplies	2,002
Telephone/Fax/Broadband/Website Server	2,551
Travel-Staff & Consultant	1,130
Total Expenses	427,043
Excess or (Deficit) for Year	-54,510
Fund Balance at Beginning of Year	87,000
Fund Balance at End of Year	32,491

Patron General Members

Saiva Siddhanta Church	<i>Kou Level (\$1,000-2,499)</i>
------------------------	----------------------------------